

**TEKNIX**  
VERTICAL TRANSPORT SOLUTION



**Vilamatek**



Finest German  
Craftmanship



# WE, TEKNIX

The world is growing, changing & is a host to ever growing number of people.

What doesn't change is the willingness of every man to look beyond, to aim high towards new goals & achievements.

---

## VISION



At Teknix, our vision is to improve vertical flow of urban life, we aim at making vertical transportation safe, energy efficient, reliable & convenient. We believe in reducing carbon footprint to the minimal by improving technology & efficiency of our products.



## WHO WE ARE

Teknix Elevators, started in the year 1985, with a simple concept of achieving excellence in the field of the vertical transportation industry, and bringing about the change in how people perceive elevators.

Today, after 37 years of existence, we are leaders in the Southwest Asian market with an installed base of 27,000 elevators & ongoing with a complete end-to-end manufacturing, installation, Modernisation and Maintenance of elevators, with operation spread across 15 countries. Our Management team brings deep expertise in the field of vertical transport technology.

**38 years**

Experience

**27,000 +**

Installed units

**15**

Countries

**65,000 sq.ft.**

Manufacturing unit

## MANUFACTURING CAPABILITIES

Teknix has a world-class manufacturing facility based in the southern Indian city of Bangalore, spread over 65,000 sq. ft of space with an end-to-end manufacturing capacity of 2000 elevators annually. Our precision working machines range from world-class Fiber Laser machines to V grooving center & Servo Press brakes for ultimate finishes backed by the Quality inspection system & manufacturing process that makes us one of the best manufacturing setups in the country.

## QUALITY POLICY

At Teknix, we believe that quality is everybody's responsibility. It is this mindset that has shaped both our quality policy and our relationship with the stakeholders. Our vendors are carefully evaluated - not just for the material they supply but for their commitment to quality. Incoming raw materials and parts are inspected stringently and random sample checks are carried out on intermediate products. Every final product is thoroughly tested before it reaches our customers. Certifications, we believe, are an important part of the Quality Process. So even while we uphold the demanding standards of being an ISO-9001-2008 Certified Company, we continue to add more certifications and conform to different standards, like meeting the EN 81-71 standards for vandal-resistant elevators.

And while our obsession with quality is evident in every elevator that sports our label, we know that things can always be better. Our quest for quality therefore is a never-ending one.

Teknix Villamatek is an ultra-compact platform elevator system that adopts a world-class belt drive & suspension technology and is almost 50% smaller in the space footprint compared to a standard traction elevator. It not only saves power but also reduces the construction space by 30% and greatly reduces the top floor height & pit depth required, which makes it the most suitable option for ultra-high-end penthouses & villas where alteration to existing structure is not feasible.

Villamatek is a highly flexible product with options to install the machine on any of the one sides and give a complete vision on three sides of the shaft, with options of different entry and exit on different floors.





# FLEXIBILITY AT IT'S HEART

---



Safe and reliable



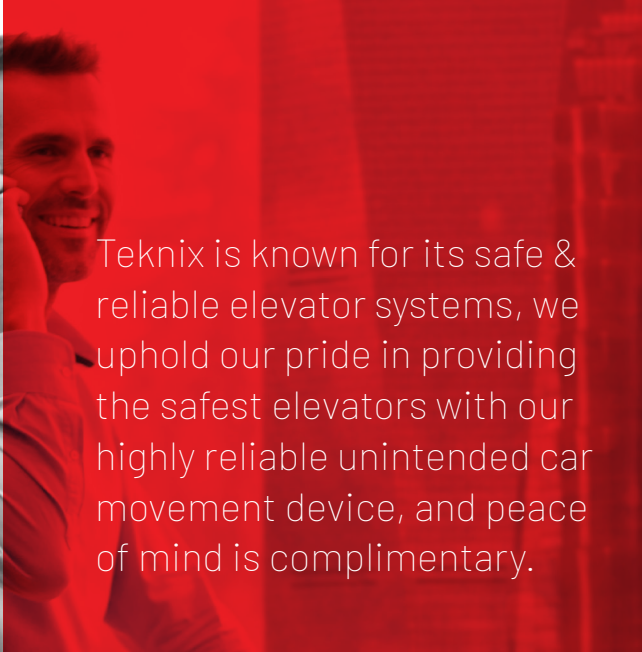
Green technology



Comfortable and quiet



Space Saving



Teknix is known for its safe & reliable elevator systems, we uphold our pride in providing the safest elevators with our highly reliable unintended car movement device, and peace of mind is complimentary.



#### **Teknix rescue device**

In case of power failure, the elevator travels to the nearest landing & the doors open for the passengers to exit.

#### **Safety edge system**



A unique safety system was developed to stop the elevator in case the occupants try to get close to the edge of the platform, the platform senses the weight of the occupant and stops the elevator from traveling further until the occupant goes back.



#### **Anti-pinch door**

In case the occupants try to manually stop the door or if there is an obstruction in between the door at the time of closing, the door returns to the open position.



#### **Dual Disc brakes**

Teknix Belt drive traction system comes equipped with dual disc brakes for ultra-smooth & safe braking.



#### **Traction belt testing device**

Teknix Villamatek comes equipped with belt breaking test device, so in case any of the internal strands of the belt are worn out & broken, the elevator would stop running & give a notification until the belt is repaired or replaced.





## FEATURES



Villamatek is one of a kind elevator with no headroom & only 65mm of pit requirement.



State-of-the-art PM-Servo Motor riding System for industry-leading performance.



State-of-the-art highly reliable and efficient integrated controllers with advanced direct landing technology and self-diagnostic systems for ultimate performance and minimum downtime of the elevator.



Microcontroller built with IOT-based operating system, helping reduce repetitive breakdowns.



Rotary encoder to give real-time RPM feedback to the controller which helps in precise leveling and smooth start/stop of the elevator with enhanced safety of passengers.



SMT - Surface Mount Technology enhances reliability and Scalability.



To increase system reliability, Villamatek is designed with an Actel Class FPGA chip-based safety circuit. This type of circuit is normally used in the airplane industry for failure-proof safety activation.



Uses PWM Dead Time Compensation technology and dynamic PWM Carrier Modulation technology to reduce noise and motor energy loss.



Villamatek Elevator comes with an extremely fast integrated control system developed on Cortex M4 MCU, to give the most reliable & fastest processing speed.



Rotary SINCOS Encoder gives real-time RPM feedback to the controller which helps in precise leveling as well as smoothest start/stop of the elevator for enhanced passenger safety.



Direct Landing System - Villamatek comes with a Direct Landing system which completely expels the need for creeping speed and gives a complete S-curve ride.



Close loop integrated system - Villamatek range of elevators are equipped with a Multi-computer based close loop integrated drive system which helps in the smoothest start/stop for extra comfort.

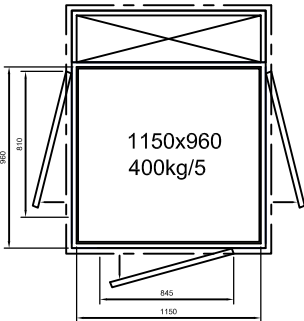
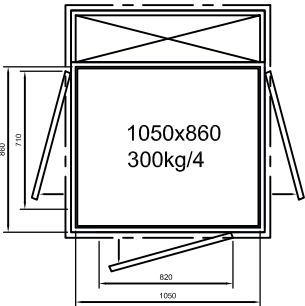
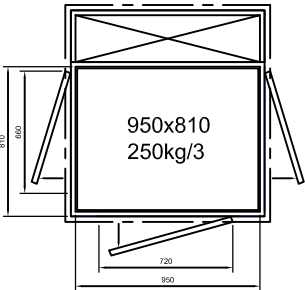
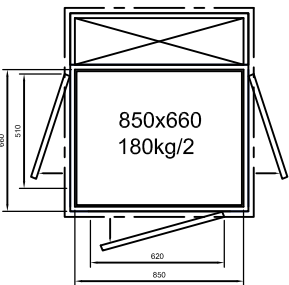
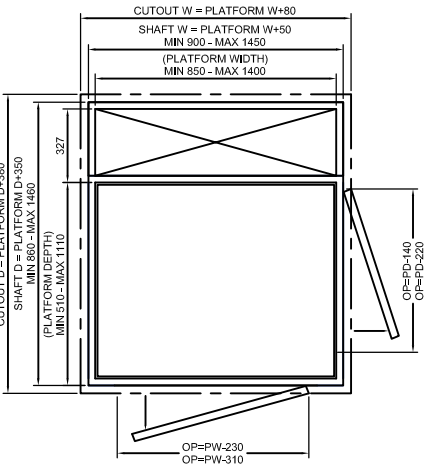




Minimum top height 2250mm  
 Pit depth 60mm  
 Min. space for villamatek elevator installation: 930x890mm

Platform width minimum 850mm - maximum 1400mm,  
 The size range supports 50mm increase or decrease.

Platform width minimum 510mm - maximum 1110mm,  
 The size range supports 50mm increase or decrease.



WEIGHT / PERSON	PLATFORM WIDTH	PLATFORM DEPTH	SHAFT WIDTH	SHAFT DEPTH	CUTOUT WIDTH	CUTOUT DEPTH
180kg / 2	850 mm	660 mm	900 mm	1010 mm	930 mm	1040 mm
250kg / 3	950 mm	810 mm	1000 mm	1160 mm	1030 mm	1190 mm
300kg / 4	1050 mm	860 mm	1100 mm	1210 mm	1130 mm	1240 mm
400kg / 5	1150 mm	960 mm	1200 mm	1310 mm	1230 mm	1340 mm



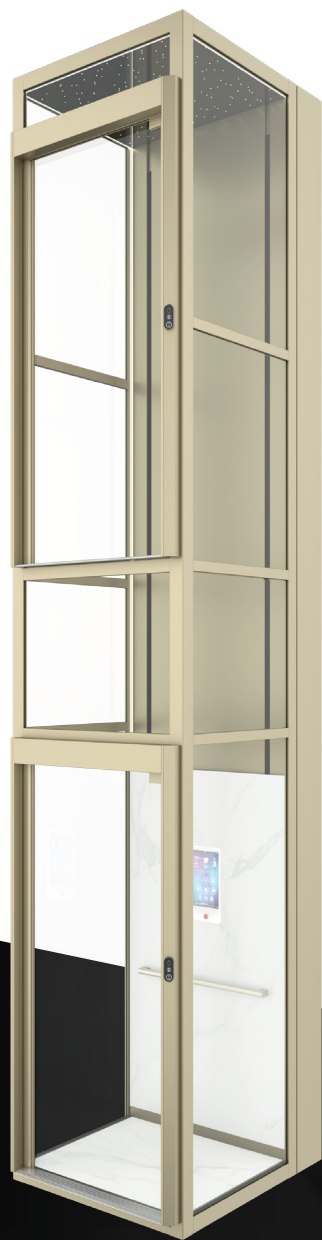
# HOISTWAY FRAME COLOR SELECTION

---





Deep Gray



Champagne Gold



Porcelain White

**Note:** The above are standard colors and other colors can be customized



Single leaf swing door



Center opening door



Unequal double door

**Note:** The above are standard colors and other colors can be customized



# DOOR OPENING TYPE

---



# LANDING HUMAN INTERFACE

Multiple options for  
personalized call buttons

---



**HOP - A08**  
(standard)



**HOP - A15**  
(Optional)



**HOP - A09**  
(Optional)



**HOP - A13**  
(Optional)

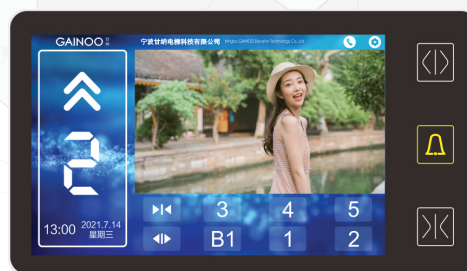


**HOP - A10**  
(Optional)

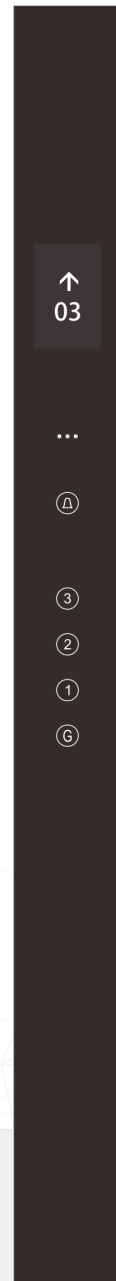
# INTELLIGENT CAR INTERFACE



Intelligent touch screen  
**COP - A05**  
(Optional)



Intelligent touch screen  
**COP - A09**  
(Optional)



Integrated COP with  
touch buttons  
**COP - A10**  
(Standard)



# INTERIOR STYLE

---



Touch button COP + Rock slab  
**JB - 01**  
(Optional)



Touch screen COP + Rock slab  
**JB - 02**  
(Optional)



Wood veneer + Aluminium  
frame + Touch screen COP  
**JB - 03**  
(Optional)



Artistic Glass + Aluminium frame  
+ Horizontal buttons COP  
**JB - 04**  
(Optional)

# FLOOR STYLES

---





---

### Rock board series

---



**DB - A01**



**DB - A02**



**DB - A03**

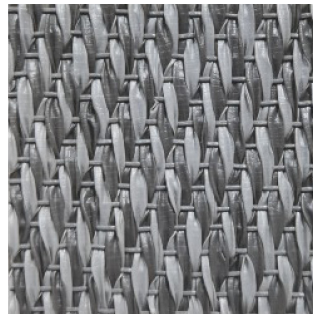
---

### Woven floor series

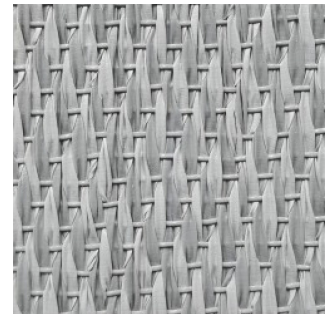
---



**DB - B01**  
(Standard)



**DB - B02**  
(Standard)

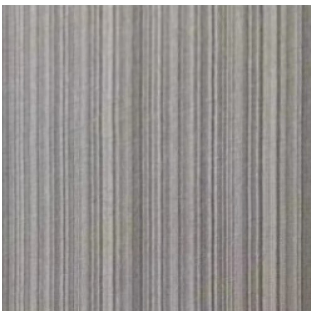


**DB - B03**  
(Standard)

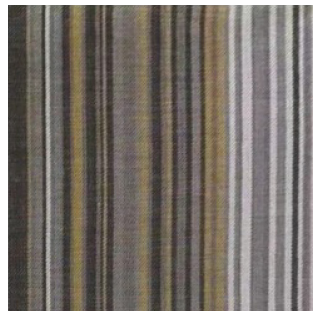
---

### Color floor series

---



**DB - D01**



**DB - D02**



**DB - D03**

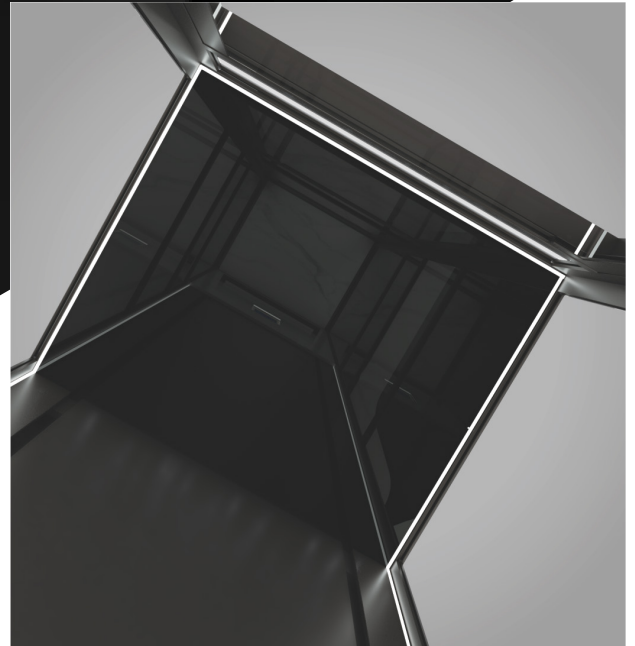
# STARRY SKY TOP CEILING

---





Black acrylic plate + spotlight  
(Standard)  
JD - 01



Black acrylic plate + surrounding line lights  
(Optional)  
JD - 02

## AMBIENT LIGHT OPTION

BLUE  
DT-01



WHITE  
DT-02



RAINBOW  
DT-03











**Certificate  
Examination of Conformity**

**Certificate No.:** KP 18/11

**Notified Body:** TÜV SÜD Industrie Service GmbH  
Zertifizierungsstelle für Produkte der Elektrotechnik  
Wiesentor 158  
80888 München - Germany

**Applicant/  
Certificate holder:** Sichei Elevator Co., Ltd.  
No. 1 Sichei Road, Lantian Industrial Park, Huizhou  
City Zhejiang Province, P.R. China

**Date of application:** 2013-09-10

**Manufacturer:** Sichei Elevator Co., Ltd.  
No. 1 Sichei Road, Lantian Industrial Park, Huizhou  
City Zhejiang Province, P.R. China

**Product, Type:** Escalator (GR20)

**Scope of application:** Rise: 0.45/0.52 m, depending on  
- inclination (1:20° / 1:30°)  
- rated speed: 0.5 m/s (1.75 m/s)  
- step width: 600mm / 600mm

**Test laboratory:** TÜV SÜD Industrie Service GmbH  
Prüfaboratorium für Produkte der Elektrotechnik  
Wiesentor 158  
80888 München - Germany

**Date and  
Number of Test Report:** 2013-08-30  
KP 18/11

**Test specifications:** - DIN EN 12002, Annex I  
- EN 115-1:2008+A1:2010

**Validity:** This certificate is valid until 2016-10-06

**Result:** The escalator (GR20) fulfils the requirements of the test specifications for the respective scope of application stated in the scope, page 1, of the certificate keeping the mentioned conditions.

**Date of issue:** 2013-10-07

Certification body for life and safety components  
C. Blum  
Christian Blum

**EC type-examination certificate**

**Certificate no.:** MA 1545/1

**Notified body:** TÜV SÜD Industrie Service GmbH  
Zertifizierungsstelle für Aufzüge und Seilbahnbauteile  
Wiesentor 158  
80888 München - Germany

**Applicant/  
Certificate holder:** Sichei Elevator Co., Ltd.  
No. 1 Sichei Road, Lantian Industrial Park, Huizhou  
City Zhejiang Province, P.R. China

**Date of application:** 2013-09-10

**Manufacturer of the test sample:** Sichei Elevator Co., Ltd.  
No. 1 Sichei Road, Lantian Industrial Park, Huizhou  
City Zhejiang Province, P.R. China

**Product:** Traction driven elevator without separate machine room

**Type:** GAPP201-0.50 kg - 1000 kg

**Test laboratory:** TÜV SÜD Industrie Service GmbH  
Prüfaboratorium für Produkte der Elektrotechnik  
Wiesentor 158  
80888 München - Germany

**Date and  
number of the test report:** 2013-08-30  
MA 1545/1

**EC Declaration:** 001/16-EG

**Result:** The model 001 satisfies the essential safety requirements of the 19th directive 89/391/EEC for the scope of application as stated on page 1 to 4 of the Annex to the EC type examination certificate.

**Date of issue:** 2013-10-07

Certification body for life and safety components  
S. Richter  
Siegfried Richter

**Certificate  
Examination of Conformity**

**Certificate No.:** KP 18/11

**Notified Body:** TÜV SÜD Industrie Service GmbH  
Zertifizierungsstelle für Produkte der Elektrotechnik  
Wiesentor 158  
80888 München - Germany

**Applicant/  
Certificate holder:** Sichei Elevator Co., Ltd.  
No. 1 Sichei Road, Lantian Industrial Park, Huizhou  
City Zhejiang Province, P.R. China

**Date of application:** 2013-09-10

**Manufacturer:** Sichei Elevator Co., Ltd.  
No. 1 Sichei Road, Lantian Industrial Park, Huizhou  
City Zhejiang Province, P.R. China

**Product, Type:** Moving walk (GR20)

**Scope of application:** Max. Length: 40.0 m, depending on  
- power with 0.50 / 0.60 / 1.00 m/s  
- inclination: 0° / 12°  
- rated speed: 0.5 / 0.60 / 1.0 m/s

**Test laboratory:** TÜV SÜD Industrie Service GmbH  
Prüfaboratorium für Produkte der Elektrotechnik  
Wiesentor 158  
80888 München - Germany

**Date and  
Number of Test Report:** 2013-08-30  
KP 18/11

**Test specifications:** - DIN EN 12002, Annex I  
- EN 115-1:2008+A1:2010

**Validity:** This certificate is valid until 2016-10-06

**Result:** The moving walk (GR20) fulfils the requirements of the test specifications for the respective scope of application stated in the scope, page 1, of the certificate keeping the mentioned conditions.

**Date of issue:** 2013-10-07

Certification body for life and safety components  
C. Blum  
Christian Blum



24/7

24x7 Service\*

180  
MINUTES

180 Mins Guaranteed  
Service Response\*



Safe



Performance  
with Style



Feature  
Loaded

## UAE - United Arab Emirates

Teknix Prime Lifts Trading Co. LLC  
Office no. F29, Al Khaima Bldg, 2 Al Barsha, Dubai- UAE  
sales.dxb@teknixelevators.com | +971-56 981 8705

## TEKNIX ELEVATORS PVT. LTD. (INDIA)

### Head office

#125, Gala Square, 4th Floor R.V Road,  
VV Puram, Near Lalbagh Westgate, Bangalore – 560004  
Ph : 080- 41253500/ 41483500 / 9148788011 | Toll Free : 1800- 1200-903

### Manufacturing Unit

No.15/132/98/B Survey no. 1/4 , Kolur,  
Off Mysore road, Near Big Banyan Tree  
Tavrekere Hobli, Bangalore 560060 | Ph : +91- 9071211445

### Hyderabad

#30, Indus Space Centre, 3rd Floor 100 Feet Road,  
Kavuri Hills, Madhapur Main Road,  
Hyderabad- 500081  
76249 16882

### Chennai

Old#29, New #62, 3rd Floor, 3rd Street,  
Abhiramapuram,  
Chennai- 600018  
78997 23060

### Coimbatore

7,3, Sambandam Road E,  
R S Puram, Coimbatore,  
Tamil Nadu- 641002  
78997 23060

### Visakhapatnam

Contact No: 63602 87035

### Belgaum

Contact No: 63602 87258

### Mangalore

Contact No: 84319 09748

## INTERNATIONAL BRANCHES

### Nepal

Elevator Solutions Nepal Pvt Ltd.( TEKNIX)  
Nagapokhari, Kathamandu, Nepal.  
+977 1 4433280 | Mob : +977-98020 80880  
Email : info@elevatorolutionsnepal.com.np

### Maldives

Vertical Solutions Pvt Ltd  
M. Hazaarumaage, Fareedheemagu, 20191  
Male, Maldives | Ph : 3343833

\* 24x7 service is provided for emergency evacuations only. Breakdown services would be provided in regular working hours of regular working days.

\*180 mins guaranteed service response is the response time from the time of lodging the complaint on toll free number and it is the time required for the representative to reach the place of installation. 180 mins guaranteed service would be considered only in case the complain is lodged within the working hours of working days.